

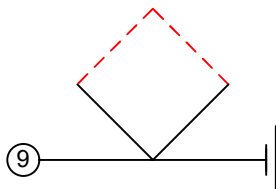
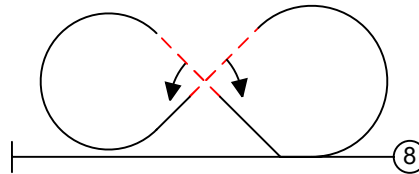
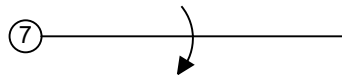
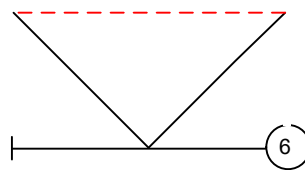
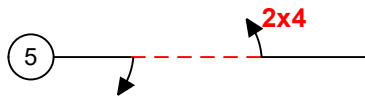
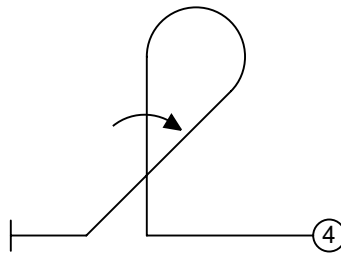
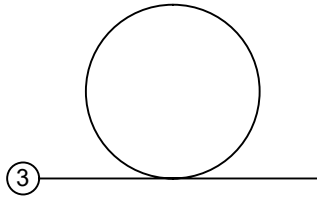
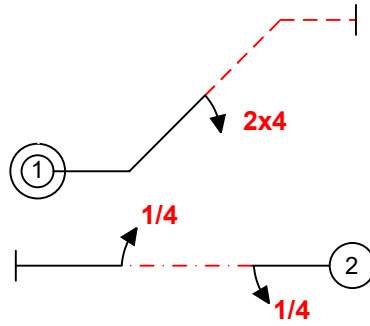


B Contest: **Jet Precision Aerobatics Schedule**

Date: **2019**

Program: **BASIC & SCALE KNOWN**

wind direction



2019 JET PRECISION AEROBATICS SCHEDULE

BASIC & SCALE KNOWN



(All maneuvers performed in the center, turnarounds are not judged)

(1) 45° Upline with two ¼ rolls

From upright, pull 1/8 loop into a 45 degree upline, perform two consecutive ¼ rolls, pull through 1/8 loop, exit inverted.

(2) Knife edge Flight

From upright perform a ¼ roll into sustained Knife Edge Flight, perform a ¼ roll, exit upright.

(3) Loop

From upright, pull through a loop, exit upright.

(4) Teardrop (5/8 vertical loop) with full roll up

From upright, pull through a ¼ loop to a vertical upline, perform a full roll, pull through a 5/8 loop into a 45 degree downline, pull through a 1/8 loop, exit upright.

(5) Roll Combination with consecutive half slow roll, and in opposite direction two ¼ rolls

From upright, perform consecutively a ½ slow roll, a ¼ roll in opposite direction, a ¼ roll, exit upright.

(6) Triangle

From upright, pull through a 1/8 loop into a 45 degree upline. Pull through a 3/8 loop into a horizontal line, pull through a 3/8 loop into a 45 degree downline. Pull through a 1/8 loop, exit upright.

(7) Slow roll

From upright perform a slow roll, exit upright.

(8) Reverse Cuban 8 with ½ rolls

From upright, pull through a 1/8 loop into a 45° upline, perform ½ roll, pull through a ¾ loop into a 45°upline, perform a ½ roll, pull through a 5/8 loop, exit upright.

(9) Square Loop on Corner

From upright, pull through a 1/8 loop into a 45 degree upline, pull through a ¼ loop into a 45 degree inverted upline, pull through a ¼ loop into a 45 degree inverted downline, pull through a ¼ loop into a 45 degree upright downline, pull through 1/8 loop, exit upright.