



B

Contest: **Jet Precision Aerobatics Schedule**

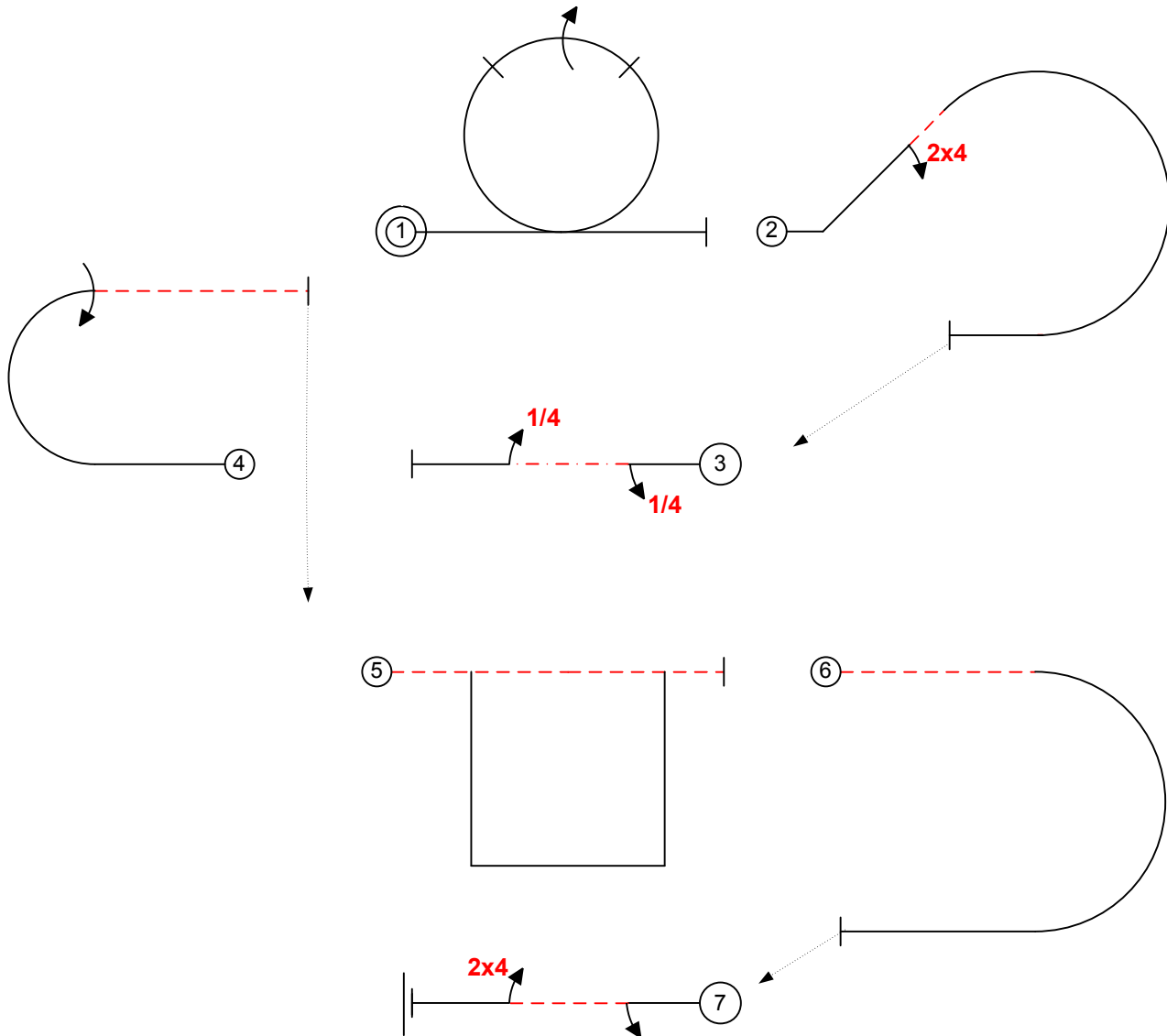
Date:

2019

Program:

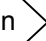
Jet Precision EDF KNOWN

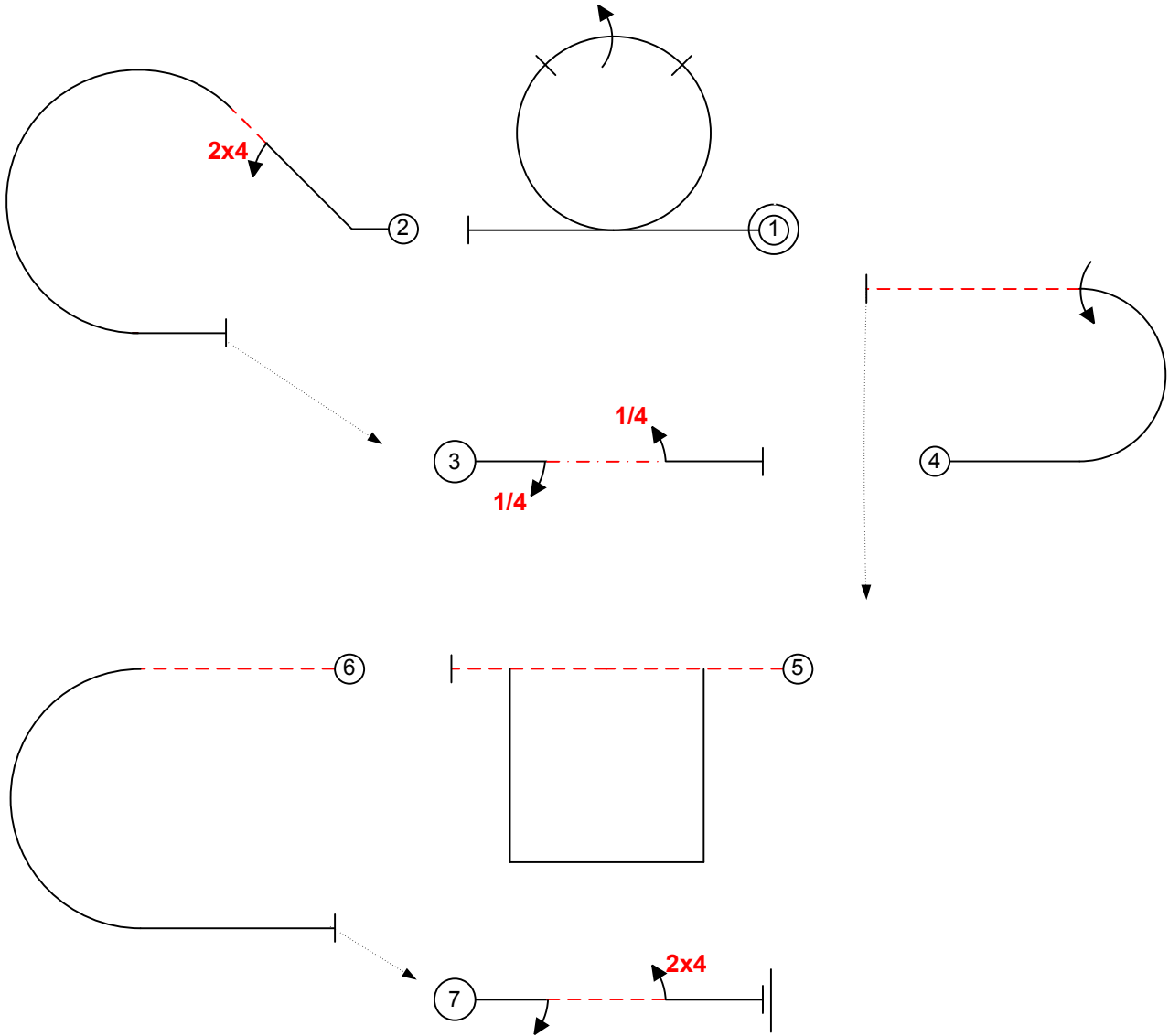
wind direction





C	Contest: Jet Precision Aerobatics Schedule
Date: 2019	Program: Jet Precision EDF KNOWN

wind direction 



2019 JET PRECISION AEROBATICS SCHEDULE

EDF KNOWN



(1) Loop, with roll integrated over top 90 degrees

From upright, pull through a loop while performing an integrated roll in the top 90 degrees of the loop, exit upright.

(2) Half Reverse Cuban 8 with two 1/4 rolls

From upright, pull through a 1/8 loop into a 45 degree upline, perform a 1/4 roll, a 1/4 roll, pull through a 5/8 loop, exit upright.

(3) Knife edge Flight

From upright perform a 1/4 roll into sustained Knife Edge Flight, perform a 1/4 roll, exit upright.

(4) Immelmann with roll

From upright, pull through a 1/2 loop, immediately followed by a full roll, exit inverted.

(5) Down Square Loop

From inverted, pull through a 1/4 loop into a vertical downline, pull through a 1/4 loop, pull through a 1/4 loop into a vertical upline, pull through a 1/4 loop, exit inverted.

(6) Half Loop

From inverted, pull through a 1/2 loop, exit upright.

(7) Roll Combination with consecutive half slow roll, and in opposite direction two 1/4 rolls

From upright, perform consecutively a 1/2 slow roll, a 1/4 roll in opposite direction, a 1/4 roll, exit upright.